



VOGUE UK
TOWEL WARMERS & RADIATORS

Aluminium Essentials



EST | 1990

Aluminium Essentials - Benchmark Modern Products

With favourable thermal conductivity properties and corrosion resistance, Vogue UK Aluminium Essentials are a modern contribution to the radiator & towel warmers offering.

The material has given designers the freedom to create innovative forms that blend well with modern home design and architecture. Aluminium also has a recycling rate of virtually 100% hence an environmental plus.

Lightweight aluminium heated products are incredibly easy to manoeuvre and install. The designs are ideal to fit with heat pumps and other modern boiler systems because of their low water content.

Aluminium Essentials models come with a **10 Year** Quality Guarantee

For further technical details, drawings, information and terms & conditions; see the Vogue UK Ltd website:

www.vogueuk.co.uk

Symbols Guide :

- AL** ALUMINIUM - Providing a quick heat up time thus allowing for greater efficiency with a low water content.
- H** HEATING & HOT WATER - Suitable for all heating and hot water systems throughout Aluminium Essentials.
- E** ELECTRIC ONLY - Can be specified as electric with a heating element where this symbol is displayed.
- D** HEATING & ELECTRIC - Also known as 'Dual Fuel'. Where the combination of fuel type can be specified.



Rhomba AU039
Matt Bronze - See page 26

CASTERTON HORIZONTAL AU011

A modern approach to classical radiator design. Casterton's modern columns features simple, rounded forms and offers more substance than standard home style radiators. Lightweight aluminium in this format makes for a robust visual option and marks a new generation of column radiator design. Casterton slots comfortably in both classic and contemporary interiors.



Showing Textured White



For valves see the Vogue UK Website
VL003 Chrome pictured
£51.00 ex VAT
£61.20 inc VAT

Textured White



Textured Black



Textured Grey



Matt Bronze



CASTERTON HORIZONTAL

Column Depth 97mm	Dimensions (mm)			No. of Sections	End to End Connections	ΔT 50°C Watts/BTU's	ΔT 60°C BTU's	£ White / Black / Grey		£ Matt Bronze		Stock Info
	H	W	D					ex VAT	inc VAT	ex VAT	inc VAT	
AU011	600	640	118	11	640	1023 / 3490	4422	643.72	772.46	674.36	809.23	✓
AU011	600	760	118	13	760	1209 / 4125	5226	754.88	905.86	790.81	948.97	✓
AU011	600	1000	118	17	1000	1581 / 5394	6834	977.18	1172.62	1023.73	1228.48	✓
AU011	600	1240	118	21	1240	1953 / 6664	8443	1207.25	1448.70	1264.73	1517.68	✓
AU011	600	1360	118	23	1360	2139 / 7298	9247	1318.40	1582.08	1381.19	1657.43	✓

CASTERTON VERTICAL AU012

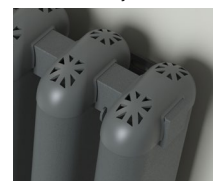
The vertical format Casterton radiator range offers a substantial product for hallways and wall reveals. The rounded form is a modern take on column style radiators and is well suited to interiors projects where the finish is; subtle, harmonious and at the same time, confidently put together.



Matt Bronze



Textured Grey



Textured Black



Textured White



For valves see the Vogue
UK Website
VL003 Chrome pictured
£51.00 ex VAT
£61.20 inc VAT

CASTERTON VERTICAL

Column Depth 97mm	Dimensions (mm)			No. of Sections	End to End Connections	ΔT 50°C Watts/BTU's	ΔT 60°C BTU's	£ White / Black / Grey		£ Matt Bronze		Stock Info
	H	W	D					ex VAT	inc VAT	ex VAT	inc VAT	
AU012	1800	280	118	5	280	1335 / 4555	5771	726.78	872.14	761.39	913.67	✓
AU012	1800	400	118	7	400	1869 / 6377	8080	989.76	1187.71	1036.92	1244.30	✓
AU012	1800	520	118	9	520	2403 / 8199	10389	1256.41	1507.69	1316.23	1579.23	✓

RIVEA HORIZONTAL AU001

'Form follows function'. An architecturally inspired product made up of vertical fins, Rivea offers efficient heat distribution within an effective looking design. Available in Matt black, Textured White, Textured Grey and Matt Bronze the range is ideal for those wanting to escape the ubiquitous look and feel of pressed panel style radiators.



Showing Textured White

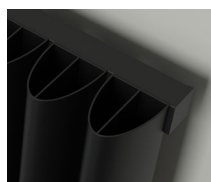


For valves see the Vogue UK Website
VL003 Chrome pictured
£51.00 ex VAT
£61.20 inc VAT

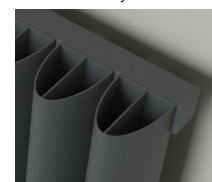
Textured White



Textured Black



Textured Grey



Matt Bronze



RIVEA HORIZONTAL

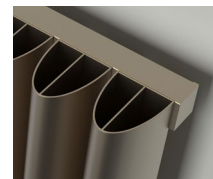
	Dimensions (mm)			No. of Sections	End to End Connections	ΔT 50°C Watts/BTU's	ΔT 60°C BTU's	£ White / Black / Grey		£ Matt Bronze		Stock Info
	H	W	D					ex VAT	inc VAT	ex VAT	inc VAT	
AU001	575	600	117	11	600	836 / 2852	3613	580.25	696.30	607.86	729.43	✓
AU001	575	820	117	15	820	1140 / 3890	4929	764.85	917.82	816.82	980.18	✓
AU001	575	1040	117	19	1040	1444 / 4927	6243	979.11	1174.93	1025.74	1230.89	✓
AU001	575	1205	117	22	1205	1672 / 5705	7228	1135.85	1363.02	1189.96	1427.95	✓
AU001	575	1425	117	26	1425	1976 / 6742	8542	1335.28	1602.34	1398.92	1678.70	✓

RIVEA VERTICAL AU002

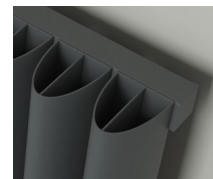
In vertical format Rivea has a stance that can add a sense of height to a room. The rounded fin format design sits nicely in kitchens, hallways and wall breaks between windows. Mixing horizontal and vertical Rivea models within an interior scheme offers assured design options.



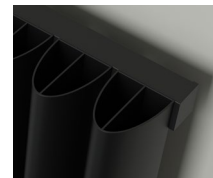
Matt Bronze



Textured Grey



Textured Black



Textured White



For valves see the Vogue
UK Website
VL003 Matt Black
pictured
£51.00 ex VAT
£61.20 inc VAT

RIVEA VERTICAL

	Dimensions (mm)			No. of Sections	End to End Connections	ΔT 50°C Watts/BTU's	ΔT 60°C BTU's	£ White / Black / Grey		£ Matt Bronze		Stock Info
	H	W	D					ex VAT	inc VAT	ex VAT	inc VAT	
AU002	1775	380	117	7	380	1519 / 5183	6567	902.73	1083.28	945.75	1134.90	✓
AU002	1775	490	117	9	490	1953 / 6664	8443	1141.92	1370.30	1196.31	1435.57	✓
AU002	1775	600	117	11	600	2387 / 8114	10319	1381.07	1657.28	1446.88	1736.26	✓

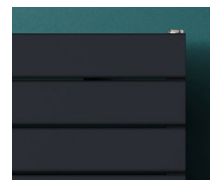
FLY LINE II HORIZONTAL DR002

Available in single or double panel versions, the Fly Line Horizontal is a fresh alternative to a conventional radiator. The long parallel lines and structured silhouette create a contemporary and current approach to the classic radiator profile we all know.

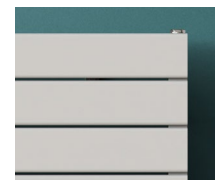


For valves see the Vogue UK Website
VL003 Chrome pictured
£51.00 ex VAT
£61.20 inc VAT

Anthracite



White



FLY LINE II HORIZONTAL

	Dimensions (mm)			No. of Sections	Pipe Centres (mm)	ΔT 50°C Watts/BTU's	ΔT 60°C BTU's	£ Anthracite / White		Stock Info
	H	W	D					ex VAT	inc VAT	
DR002SP (single panel)	440	900	75	6	870	680 / 2319	2938	254.00	304.80	✓
DR002SP (single panel)	440	1200	75	6	1150	881 / 3006	3809	316.00	379.20	✓
DR002SP (single panel)	588	900	75	8	870	906 / 3092	3918	324.00	388.80	✓
DR002SP (single panel)	588	1200	75	8	1150	1175 / 4009	5079	405.00	486.00	✓
DR002DP (double panel)	440	900	122	6	870	1161 / 3960	5017	357.00	428.40	✓
DR002DP (double panel)	440	1200	122	6	1150	1513 / 5163	6542	439.00	526.80	✓
DR002DP (double panel)	588	900	122	8	870	1548 / 5281	6691	460.00	552.00	✓
DR002DP (double panel)	588	1200	122	8	1150	2018 / 6886	8725	569.00	682.80	✓

FLY LINE II VERTICAL DR001

Manufactured from high quality aluminium, Fly Line II offers a supreme heat output and sleek good looks. Available in white or anthracite as single or double panelled in eight popular formats.



AL H



For valves see the Vogue UK Website
VL003 Chrome pictured
£51.00 ex VAT
£61.20 inc VAT

Anthracite



White



FLY LINE II VERTICAL

	Dimensions (mm)			No. of Sections	End to End Connections	ΔT 50°C Watts/BTU's	ΔT 60°C BTU's	£ Anthracite / White		Stock Info
	H	W	D					ex VAT	inc VAT	
DR001SP (single panel)	1800	218	66	3	218	642 / 2190	2775	246.00	295.20	✓
DR001SP (single panel)	1800	366	66	5	366	1070 / 3651	4626	374.00	448.80	✓
DR001SP (single panel)	1800	514	66	7	514	1499 / 5113	6478	502.00	602.40	✓
DR001SP (single panel)	1800	662	66	9	662	1927 / 6574	8329	633.00	759.60	✓
DR001DP (double panel)	1800	218	92	3	218	1109 / 3783	4793	331.00	397.20	✓
DR001DP (double panel)	1800	366	92	7	366	1849 / 6308	7992	513.00	615.60	✓
DR001DP (double panel)	1800	514	92	7	514	2589 / 8833	11192	694.00	832.80	✓
DR001DP (double panel)	1800	662	92	9	662	3329 / 11358	14391	879.00	1054.80	✓

ARDOR HORIZONTAL AU021 & AU023

If you are seeking an alternative to white gloss steel panel radiators... These aluminium models offer the next level of specification. Ideal for use with heat pumps and eco efficient boilers. Multiple width options are available in four contemporary finishes. Specified as single or double column depth units, which are an option where a greater heat output is required.

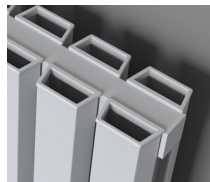


Showing Textured Grey
single panel format

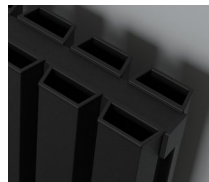


For valves see the Vogue
UK Website
VL023 Chrome pictured
£61.00 ex VAT
£73.20 inc VAT

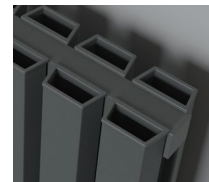
Textured White



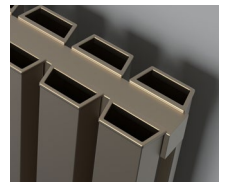
Textured Black



Textured Grey



Matt Bronze



ARDOR HORIZONTAL

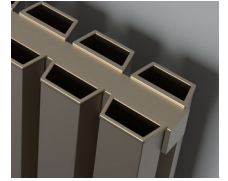
	Dimensions (mm)			No. of Columns	End to End Connections	ΔT 50°C Watts/BTU's	ΔT 60°C BTU's	£ White / Black / Grey		£ Matt Bronze		Stock Info
	H	W	D					ex VAT	inc VAT	ex VAT	inc VAT	
AU021 (single panel)	575	404	75-84	7	404	399 / 1361	1724	312.84	375.41	327.75	393.30	✓
AU021 (single panel)	575	581	75-84	10	581	570 / 1945	2464	433.52	520.22	454.10	544.92	✓
AU021 (single panel)	575	817	75-84	14	817	798 / 2723	3450	594.36	713.23	622.62	747.14	✓
AU021 (single panel)	575	994	75-84	17	994	969 / 3306	4189	714.96	857.95	749.01	898.81	✓
AU021 (single panel)	575	1171	75-84	20	1171	1140 / 3890	4929	835.60	1002.72	875.40	1050.48	✓
AU021 (single panel)	575	1407	75-84	24	1407	1368 / 4668	5914	1002.23	1202.68	1049.94	1259.93	✓
AU023 (double panel)	575	404	100-109	7	404	623 / 2126	2694	375.31	450.37	393.20	471.84	✓
AU023 (double panel)	575	581	100-109	10	581	890 / 3037	3848	522.80	627.36	547.68	657.22	✓
AU023 (double panel)	575	817	100-109	14	817	1246 / 4251	5386	719.34	863.21	753.59	904.31	✓
AU023 (double panel)	575	994	100-109	17	994	1513 / 5162	6540	866.75	1040.10	908.04	1089.65	✓
AU023 (double panel)	575	1171	100-109	20	1171	1780 / 6073	7695	1014.17	1217.00	1062.45	1274.94	✓
AU023 (double panel)	575	1407	100-109	24	1407	2136 / 7288	9234	1216.49	1459.79	1274.42	1529.30	✓

ARDOR VERTICAL AU022 & AU024

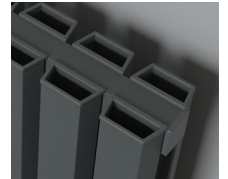
These taller designs with geometric upright columns suit kitchens, hallways and living rooms. The Ardor range is available in contemporary Textured Black or Grey, classical Textured White, or Matt Bronze, which leans towards the latest trends in metallic finishes. Single or double column depth options can be specified depending on your heat output requirements.



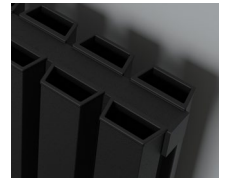
Matt Bronze



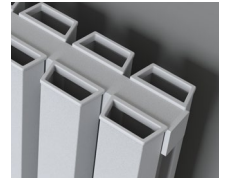
Textured Grey



Textured Black



Textured White



For valves see the Vogue UK Website
VL023 Chrome pictured
£61.00 ex VAT
£73.20 inc VAT

ARDOR VERTICAL

	Dimensions (mm)			No. of Columns	End to End Connections	ΔT 50°C Watts/BTU's	ΔT 60°C BTU's	£ White / Black / Grey		£ Matt Bronze		Stock Info
	H	W	D					ex VAT	inc VAT	ex VAT	inc VAT	
AU022 (single panel)	1775	286	75-84	5	286	765 / 2610	3307	486.10	583.32	509.21	611.05	✓
AU022 (single panel)	1775	345	75-84	6	345	918 / 3132	3968	573.73	688.48	601.07	721.28	✓
AU022 (single panel)	1775	404	75-84	7	404	1071 / 3654	4630	657.99	789.59	689.35	827.22	✓
AU022 (single panel)	1775	463	75-84	8	463	1224 / 4176	5291	731.44	877.73	781.21	937.45	✓
AU022 (single panel)	1775	522	75-84	9	522	1377 / 4698	5952	833.31	999.97	872.98	1047.58	✓
AU024 (double panel)	1775	286	100-109	5	286	1255 / 4282	5425	619.40	743.28	648.91	778.69	✓
AU024 (double panel)	1775	345	100-109	6	345	1506 / 5138	6510	733.73	880.48	768.66	922.39	✓
AU024 (double panel)	1775	404	100-109	7	404	1757 / 5995	7596	844.92	1013.90	884.92	1061.90	✓
AU024 (double panel)	1775	463	100-109	8	463	2008 / 6851	8680	959.01	1150.81	1004.68	1205.62	✓
AU024 (double panel)	1775	522	100-109	9	522	2259 / 7708	9766	1073.34	1288.01	1124.47	1349.36	✓

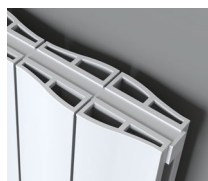
GLANE HORIZONTAL AU003 & AU005

The horizontal format Glane aluminium radiator uses undulating ridge columns to give a flowing design form. Available in five width formats and a further three widths in the vertical version of the Glane radiator, the range has a model to accommodate your heating and design requirements.



For valves see the Vogue UK Website
VL003 Matt Black pictured
 £51.00 ex VAT
 £61.20 inc VAT

Textured White



Textured Black



Textured Grey



GLANE HORIZONTAL

	Dimensions (mm)			No. of Columns	End to End Connections	ΔT 50°C Watts/BTU's	ΔT 60°C BTU's	£ White / Black / Grey		Stock Info
	H	W	D					ex VAT	inc VAT	
AU003 (single panel)	575	620	79-88	6	620	642 / 2191	2776	409.52	491.42	✓
AU003 (single panel)	575	828	79-88	8	828	856 / 2921	3701	535.74	642.89	✓
AU003 (single panel)	575	1036	79-88	10	1036	1070 / 3651	4626	662.34	794.81	✓
AU003 (single panel)	575	1244	79-88	12	1244	1284 / 4381	5551	793.03	951.64	✓
AU003 (single panel)	575	1452	79-88	14	1452	1498 / 5111	6476	919.53	1103.44	✓
AU005 (double panel)	575	620	114-123	6	620	1488 / 5077	6433	546.92	656.30	✓
AU005 (double panel)	575	828	114-123	8	828	1984 / 6769	8576	718.58	862.30	✓
AU005 (double panel)	575	1036	114-123	10	1036	2480 / 8462	10721	890.27	1068.32	✓
AU005 (double panel)	575	1244	114-123	12	1244	2976 / 10154	12865	1069.12	1282.94	✓
AU005 (double panel)	575	1452	114-123	14	1452	3472 / 11846	15009	1240.81	1488.97	✓

GLANE VERTICAL AU004 & AU006

This tall Glane designer aluminium radiators use vertical ridge forms to create simple elegance. In three width options, the large format columns are 1775mm high and give heated warmth as well as form to wall reveals within interiors. The Glane vertical and horizontal radiators suite the whole home, as an alternative to standard, pressed panel radiators.



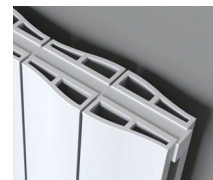
Textured Grey



Textured Black



Textured White



For valves see the Vogue UK Website
VL004 Chrome pictured
£79.00 ex VAT
£94.80 inc VAT

GLANE VERTICAL

	Dimensions (mm)			No. of Columns	End to End Connections	ΔT 50°C Watts/BTU's	ΔT 60°C BTU's	£ White / Black / Grey		Stock Info
	H	W	D					ex VAT	inc VAT	
AU004 (single panel)	1775	204	79-88	2	204	600 / 2047	2594	332.13	398.56	✓
AU004 (single panel)	1775	412	79-88	4	412	1200 / 4094	5187	614.78	737.74	✓
AU004 (single panel)	1775	620	79-88	6	620	1800 / 6142	7782	897.42	1076.90	✓
AU006 (double panel)	1775	204	100-109	2	204	1456 / 4968	6295	487.06	584.47	✓
AU006 (double panel)	1775	412	100-109	4	412	2912 / 9936	12589	903.41	1084.09	✓
AU006 (double panel)	1775	620	100-109	6	620	4368 / 14904	18883	1326.52	1591.82	✓

RUCHE HORIZONTAL AU007 & AU009

Ruche aluminium, horizontal radiators come as single or double panel designs. The range has five width options and four contemporary classic colours. The fluted frontage that is a signature detail of this range adds texture and interest to interior room schemes. Ruche is also available in a vertical format, making the family of products suitable for the whole home.



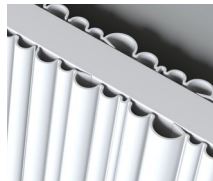
AL H

Showing Matt Black single panel format



For valves see the Vogue UK Website
VL023 Matt Black pictured
£61.00 ex VAT
£73.20 inc VAT

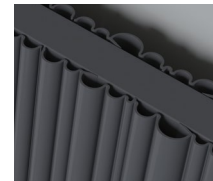
Matt White



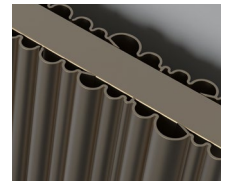
Matt Black



Matt Grey



Matt Bronze



RUCHE HORIZONTAL

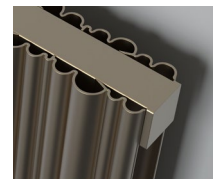
	Dimensions (mm)			End to End Connections	ΔT 50°C Watts/BTU's	ΔT 60°C BTU's	£ White / Black / Grey		£ Matt Bronze		Stock Info
	H	W	D				ex VAT	inc VAT	ex VAT	inc VAT	
AU007 (single panel)	575	479	63-72	479	492 / 1679	2127	298.65	358.38	312.92	375.50	✓
AU007 (single panel)	575	719	63-72	719	738 / 2518	3190	431.15	517.38	451.89	542.27	✓
AU007 (single panel)	575	959	63-72	959	984 / 3357	4253	563.97	676.76	590.86	709.03	✓
AU007 (single panel)	575	1199	63-72	1199	1230 / 4197	5318	701.29	841.55	734.66	881.59	✓
AU007 (single panel)	575	1439	63-72	1439	1476 / 5036	6381	833.95	1000.74	873.63	1048.36	✓
AU009 (double panel)	575	479	78-87	479	768 / 2620	3320	378.64	454.37	396.69	476.03	✓
AU009 (double panel)	575	719	78-87	719	1152 / 3931	4981	550.38	660.46	576.63	691.96	✓
AU009 (double panel)	575	959	78-87	959	1536 / 5241	6640	722.02	866.42	756.52	907.82	✓
AU009 (double panel)	575	1199	78-87	1199	1920 / 6551	8300	901.53	1081.84	944.46	1133.35	✓
AU009 (double panel)	575	1439	78-87	1439	2304 / 7861	9960	1073.26	1287.91	1124.35	1349.22	✓

RUCHE VERTICAL AU008 & AU010

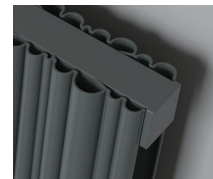
This taller version of the Ruche radiator makes the most of liner rounded ridge lines, which can help to extend the feeling of height in your room. Ideal for properties with high ceilings and shorter wall reveals, the range is available in single or double panel format. The lightweight aluminium radiators can be specified in four popular widths and in four modern classic finishes.



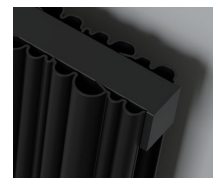
Matt Bronze



Matt Grey



Matt Black



Matt White



For valves see the Vogue UK Website
VL003 Chrome pictured
£51.00 ex VAT
£61.20 inc VAT

RUCHE VERTICAL

	Dimensions (mm)			End to End Connections	ΔT 50°C Watts/BTU's	ΔT 60°C BTU's	£ White / Black / Grey		£ Matt Bronze		Stock Info
	H	W	D				ex VAT	inc VAT	ex VAT	inc VAT	
AU008 (single panel)	1775	239	63-72	239	696 / 2375	3009	318.38	382.06	333.58	400.30	✓
AU008 (single panel)	1775	359	63-72	359	1044 / 3562	4513	463.14	555.77	485.17	582.20	✓
AU008 (single panel)	1775	479	63-72	479	1392 / 4750	6018	607.86	729.43	636.81	764.17	✓
AU008 (single panel)	1775	599	63-72	599	1740 / 5937	7522	752.62	903.14	788.48	946.18	✓
AU010 (double panel)	1775	239	78-87	239	1130 / 3856	4886	446.86	536.23	468.17	561.80	✓
AU010 (double panel)	1775	359	78-87	359	1695 / 5783	7327	654.90	785.88	686.05	823.26	✓
AU010 (double panel)	1775	479	78-87	479	2260 / 7711	9770	862.89	1035.47	903.98	1084.78	✓
AU010 (double panel)	1775	599	78-87	599	2825 / 9639	12213	1070.89	1285.07	1121.86	1346.23	✓

TARLTON HORIZONTAL AU015

As an aluminium alternative to mild steel column radiators or pressed steel panel radiators, Tarlton gives a form with a strong yet simple form. The design consists of generous upright columns with honeycomb type vent detailing. Tarlton horizontal is available in seven widths and four contemporary finishes; Textured Black, Grey, White and Matt Bronze.



For valves see the Vogue UK Website
VL004 Chrome pictured
£79.00 ex VAT
£94.80 inc VAT

Textured White



Textured Black



Textured Grey



Matt Bronze



TARLTON HORIZONTAL

Column Depth 61mm	Dimensions (mm)			No. of Sections	End to End Connections	ΔT 50°C Watts/BTU's	ΔT 60°C BTU's	£ White / Black / Grey		£ Matt Bronze		Stock Info
	H	W	D					ex VAT	inc VAT	ex VAT	inc VAT	
AU015	600	476	86-95	6	476	870 / 2968	3761	418.72	502.46	438.70	526.44	✓
AU015	600	636	86-95	8	636	1160 / 3958	5015	547.68	657.22	573.73	688.48	✓
AU015	600	796	86-95	10	796	1450 / 4947	6268	676.53	811.84	708.81	850.57	✓
AU015	600	956	86-95	12	956	1740 / 5937	7522	811.20	973.44	849.83	1019.80	✓
AU015	600	1116	86-95	14	1116	2030 / 6926	8775	940.12	1128.14	984.86	1181.83	✓
AU015	600	1276	86-95	16	1276	2320 / 7916	10030	1069.00	1282.80	1119.93	1343.92	✓
AU015	600	1436	86-95	18	1436	2610 / 8905	11283	1197.92	1437.50	1254.96	1505.95	✓

TARLTON VERTICAL AU016

Ideal for modern interiors the Tarlton Aluminium range is made up of bold vertical columns capped with a honeycomb type vent detail. In Textured Black, Grey, White and Matt Bronze; the uncomplicated design makes an interiors option that is ideal for most living areas around the home.



Matt Bronze



Textured Grey



Textured Black



Textured White



For valves see the Vogue UK Website
VL004 Chrome pictured
£79.00 ex VAT
£94.80 inc VAT

AL H

TARLTON VERTICAL

Column Depth 61mm	Dimensions (mm)			No. of Sections	End to End Connections	ΔT 50°C Watts/BTU's	ΔT 60°C BTU's	£ White / Black / Grey		£ Matt Bronze		Stock Info
	H	W	D					ex VAT	inc VAT	ex VAT	inc VAT	
AU016	1800	316	86-95	4	316	1696 / 5787	7332	610.28	732.34	639.38	767.26	✓
AU016	1800	396	86-95	5	396	2120 / 7233	9164	756.40	907.68	792.42	950.90	✓
AU016	1800	476	86-95	6	476	2544 / 8680	10998	902.53	1083.04	945.50	1134.60	✓
AU016	1800	556	86-95	7	556	2968 / 10127	12831	1048.62	1258.34	1098.55	1318.26	✓

ASTUTE HORIZONTAL SINGLE DR036

Astute provides efficiency in a design that is bold and at the same time softened by the radius columns at each end of the radiator. Weighing substantially less than steel equivalents, Astute radiators are easy to install. Available in classical White or contemporary Anthracite.



AL H



For valves see the Vogue UK Website
VL003 Chrome pictured
£51.00 ex VAT
£61.20 inc VAT

Anthracite



White



ASTUTE

HORIZONTAL (SP)

	Dimensions (mm)			No. of Sections	End to End Connections	ΔT 50°C Watts/BTU's	ΔT 60°C BTU's	£ White		£ Anthracite		Stock Info
	H	W	D					ex VAT	inc VAT	ex VAT	inc VAT	
DR036SP (single panel)	600	565	76.5	6	565	506 / 1726	2182	332.00	398.40	345.00	414.00	✓
DR036SP (single panel)	600	755	76.5	8	755	674 / 2300	2914	395.00	474.00	403.00	483.60	✓
DR036SP (single panel)	600	945	76.5	10	945	842 / 2873	3640	465.00	558.00	480.00	576.00	✓
DR036SP (single panel)	600	1135	76.5	12	1135	1011 / 3450	4371	537.00	644.40	553.00	663.60	✓
DR036SP (single panel)	600	1325	76.5	14	1325	1147 / 3914	4958	607.00	728.40	625.00	750.00	✓
DR036SP (single panel)	600	1515	76.5	16	1515	1342 / 4579	5801	676.00	811.20	699.00	838.80	✓

ASTUTE VERTICAL SINGLE DR035

Astute radiators in both horizontal and vertical formats have the range of sizes to furnish a whole home or interiors project. The vertical offering works well in kitchens, utilising the optional towel bar for tea towels. For bathrooms requiring the additional heat of a radiator, this towel hanging option works equally well.



White



Anthracite



Chrome Towel Bar
Option Sold Separately:

AC066 (320mm Wide)
£69.00 ex VAT
£60.00 inc VAT

AC066 (415mm Wide)
£91.00 ex VAT
£109.20 inc VAT

AC066 (510mm Wide)
£116.00 ex VAT
£139.20 inc VAT



For valves see the Vogue UK Website
VL003 Chrome pictured
£51.00 ex VAT
£61.20 inc VAT

ASTUTE

	Dimensions (mm)			No. of Sections	End to End Connections	ΔT 50°C Watts/BTU's	ΔT 60°C BTU's	£ White		£ Anthracite		Stock Info
	H	W	D					ex VAT	inc VAT	ex VAT	inc VAT	
DR035DP (single panel)	1800	280	76.5	3	280	843 / 2876	3644	343.44	414.13	345.00	423.58	✓
DR035DP (single panel)	1800	375	76.5	4	375	1124 / 3835	4859	419.76	474.00	403.00	521.52	✓
DR035DP (single panel)	1800	470	76.5	5	470	1405 / 4794	6074	496.08	595.30	514.10	616.92	✓

ASTUTE HORIZONTAL DOUBLE DR036DP

The Astute double panel models are the preferred option for rooms that require the additional BTU heat output. Available in five width options. The double panel version of Astute Horizontal comes in the exact same white and anthracite finish as the single panel version, so mixing and matching formats of this range gives comprehensive heating possibilities.



For valves see the Vogue UK Website
VL003 Chrome pictured
£51.00 ex VAT
£61.20 inc VAT

Anthracite



White



ASTUTE

HORIZONTAL (DP)

	Dimensions (mm)			No. of Sections	End to End Connections	ΔT 50°C Watts/BTU's	ΔT 60°C BTU's	£ White		£ Anthracite		Stock Info
	H	W	D					ex VAT	inc VAT	ex VAT	inc VAT	
DR036DP (double panel)	600	560	117.5	6	560	841 / 2869	3636	419.00	502.80	428.00	513.60	✓
DR036DP (double panel)	600	748	117.5	8	748	1121 / 3825	4846	515.00	618.00	526.00	631.20	✓
DR036DP (double panel)	600	936	117.5	10	936	1401 / 4780	6057	611.00	733.20	624.00	748.80	✓
DR036DP (double panel)	600	1124	117.5	12	1124	1654 / 5643	7150	727.00	872.40	741.00	889.20	✓
DR036DP (double panel)	600	1312	117.5	14	1312	1908 / 6510	8248	826.00	991.20	844.00	1012.80	✓

ASTUTE VERTICAL DOUBLE DR035DP

Astute Vertical Double Panel models complete the family offering of this range. With the same white and anthracite finish of the other three formats in the range. Specifiers utilise this tall double panel model in spaces where wall space is limited, yet a high heat output is required. Shown below in white, the classic design can work well in simple and more neutral settings.



White



Anthracite



Chrome Towel Bar
Option Sold Separately:

AC066 (320mm Wide)
£69.00 ex VAT
£60.00 inc VAT

AC066 (415mm Wide)
£91.00 ex VAT
£109.20 inc VAT

AC066 (510mm Wide)
£116.00 ex VAT
£139.20 inc VAT



For valves see the Vogue
UK Website
VL003 Chrome pictured
£51.00 ex VAT
£61.20 inc VAT

ASTUTE

HORIZONTAL (SP)

	Dimensions (mm)			No. of Sections	End to End Connections	ΔT 50°C Watts/BTU's	ΔT 60°C BTU's	£ White		£ Anthracite		Stock Info
	H	W	D					ex VAT	inc VAT	ex VAT	inc VAT	
DR035DP (double panel)	1800	278	117.5	3	278	1441 / 4917	6229	484.42	581.30	495.02	594.02	✓
DR035DP (double panel)	1800	372	117.5	4	372	1916 / 6537	8283	598.90	718.68	613.74	736.49	✓
DR035DP (double panel)	1800	466	117.5	5	466	2348 / 8011	10150	714.44	857.33	731.40	877.68	✓

ASTUTE COMPACT RADIATOR DR034

The Astute Compact aluminium radiator is designed to fit the smallest of space while providing the benefits of low water content and quick heat up. Often utilised in kitchens, cloakrooms and en-suites that have limited wall space. Available in Textured Black, Anthracite and White; with a towel bar options for added functionality.



Textured Anthracite



Textured Black



Textured White



Towel Bar Options
Sold Separately:
Chrome, Textured Black,
Textured Anthracite or
Textured White

AC064 (230mm Wide)
£50.00 ex VAT
£60.00 inc VAT



For valves see the Vogue
UK Website
VL003 Chrome pictured
£51.00 ex VAT
£61.20 inc VAT

ASTUTE COMPACT RADIATOR

	Dimensions (mm)			No. of Sections	End to End Connections	ΔT 50°C Watts/BTU's	ΔT 60°C BTU's	£ White / Black / Anthracite		Stock Info
	H	W	D					ex VAT	inc VAT	
DR034	1800	185	90	2	185	436 / 1488	1880	218.00	261.60	✓

ASTUTE TOWEL RAIL CN095

Astute is a contemporary towel warmer that provides great efficiency. The lightweight aluminium construction robust yet easy is to install. Available in White or Anthracite and in two popular heights, this design is a favourite for both en-suites and family bathrooms.



Anthracite



White



AL H E D



For valves see the Vogue UK Website
VL003 Chrome pictured
£51.00 ex VAT
£61.20 inc VAT

ASTUTE TOWEL RAIL

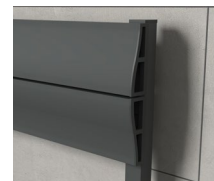
	Dimensions (mm)			No. of Cross Bars	Pipe Centres (mm)	ΔT 50°C Watts/BTU's	ΔT 60°C BTU's	£ White		£ Anthracite		Stock Info
	H	W	D					ex VAT	inc VAT	ex VAT	inc VAT	
CN095	1200	500	100	10	470	778 / 2655	3363	399.00	478.80	410.00	492.00	✓
CN095	1600	500	100	13	470	1043 / 3560	4511	451.00	541.20	462.00	554.40	✓

MORVEN TOWEL RAIL AU031

Morven aluminium towel warmers use larger format horizontal crossed bars that meet to create gentle curved areas of heat. Available in three heights, the range is designed for bathrooms of all sizes and gives substantial towel drying capabilities. Textured Black, White and Grey finish options are ideal to match with other modern bathroom fittings.



Textured Grey



Textured Black



Textured White



For valves see the Vogue UK Website
VL003 Chrome pictured
£51.00 ex VAT
£61.20 inc VAT

MORVEN TOWEL RAIL

	Dimensions (mm)			No. of Cross Bars	Pipe Centres (mm)	ΔT 50°C Watts/BTU's	ΔT 60°C BTU's	£ White / Black / Grey		Stock Info
	H	W	D					ex VAT	inc VAT	
AU031	600	485	96	4	443	341 / 1163	1474	281.12	337.34	✓
AU031	1000	485	96	6	443	523 / 1784	2260	425.52	510.62	✓
AU031	1350	485	96	8	443	699 / 2385	3022	578.72	694.46	✓

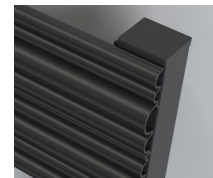
MONTO TOWEL RAIL AU028

Variable ridge line detailing gives a textural simplicity to the form of Monto. This fluting detail catches light, creating an interiors 'design detail' that compliments many of the latest bathroom furniture styles. Monto is available in finishes that match popular modern brassware, including; Matt Black and Matt Grey.

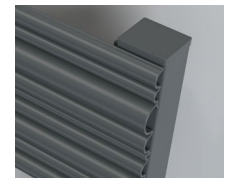


For valves see the Vogue UK Website
 VL003 Matt Black pictured
 £51.00 ex VAT
 £61.20 inc VAT

Matt Black



Matt Grey



MONTO TOWEL RAIL

	Dimensions (mm)			No. of Panels	Pipe Centres (mm)	ΔT 50°C Watts/BTU's	ΔT 60°C BTU's	£ Black / Grey		Stock Info
	H	W	D					ex VAT	Inc VAT	
AU028	700	500	72-81	3	455	329 / 1123	1423	238.63	286.36	✓
AU028	1000	500	72-81	4	455	446 / 1522	1928	323.73	388.48	✓
AU028	1300	500	72-81	5	455	563 / 1921	2434	419.33	503.20	✓
AU028	1600	500	72-81	6	455	681 / 2324	2945	500.57	600.68	✓

HERNE TOWEL RAIL AU037

Herne offers the benefits of aluminium within a trusted modern classic design, which suits the heating/drying requirements of most bathrooms. The choice for efficiency with style. Herne is available in three popular heights and three finishes that suit brassware and the latest interior design furniture.



Textured Grey



Textured Black



Textured White



For valves see the Vogue
UK Website
VL003 Chrome pictured
£51.00 ex VAT
£61.20 inc VAT

HERNE TOWEL RAIL

	Dimensions (mm)			No. of Cross Bars	Pipe Centres (mm)	ΔT 50°C Watts/BTU's	ΔT 60°C BTU's	£ White / Black / Grey		Stock Info
	H	W	D					ex VAT	inc VAT	
AU037	615	500	74	6	455	304 / 1037	1314	306.00	367.20	✓
AU037	1000	500	74	9	455	466 / 1590	2015	465.68	558.82	✓
AU037	1390	500	74	12	455	628 / 2143	2715	643.96	772.75	✓

RHOMBA TOWEL RAIL AU039

A simple design with a refined visual difference, where the framework creates an angular contemporary form. The Rhomba, diamond section towel rail has been created for bathrooms where timeless interiors can be made. Textured Black or Grey give a classical finish, whilst the Matt Bronze option leads more towards modern metallic trends.



Matt Bronze



Textured Grey



Textured Black



For valves see the Vogue
UK Website
VL003 Matt Black
pictured
£51.00 ex VAT
£61.20 inc VAT

RHOMBA TOWEL RAIL

	Dimensions (mm)			No. of Cross Bars	Pipe Centres (mm)	ΔT 50°C Watts/BTU's	ΔT 60°C BTU's	£ Black / Grey		£ Matt Bronze		Stock Info
	H	W	D					ex VAT	inc VAT	ex VAT	inc VAT	
AU039	800	497	104-124	6	455	232/ 792	1003	538.72	646.46	564.37	677.24	✓
AU039	1200	497	104-124	8	455	328 / 1119	1418	731.36	877.63	766.21	919.45	✓
AU039	1600	497	104-124	10	455	424 / 1447	1833	913.30	1095.96	956.80	1148.16	✓

CRANZA TOWEL RAIL AU033

Cranza towel rails come in four heights and two contemporary finishes, which are Textured black and Grey. These aluminium towel warmers are suited to modern bathroom interiors and are designed to make a subtle statement whilst been highly energy efficient. Both colour-ways suit simple chrome valves. The Textured Black can be pared with Matt Black valves to match bathroom taps of the same finish.



Showing Textured Grey

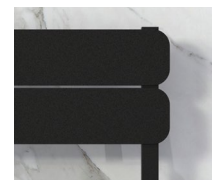


AL H E D

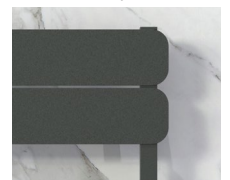


For valves see the Vogue UK Website
VL003 Chrome pictured
£51.00 ex VAT
£61.20 inc VAT

Textured Black



Textured Grey



CRANZA TOWEL RAIL

	Dimensions (mm)			No. of Cross Bars	Pipe Centres (mm)	ΔT 50°C Watts/BTU's	ΔT 60°C BTU's	£ Black / Grey		Stock Info
	H	W	D					ex VAT	inc VAT	
AU033	608	500	72	4	455	276 / 942	1194	283.45	340.14	✓
AU033	992	500	72	6	455	426 / 1454	1842	419.85	503.82	✓
AU033	1376	500	72	8	455	576 / 1965	2490	571.85	686.22	✓
AU033	1760	500	72	10	455	719 / 2453	3108	705.27	846.32	✓

CRANBY TOWEL RAIL AU043

Cranby is a design with one side open for ease of displaying towels that are been warmed and dried. The open design gives a contemporary feel and is seen as an interiors feature. Available in four modern finishes and in five height options, Cranby suits most size and style of home bathroom.



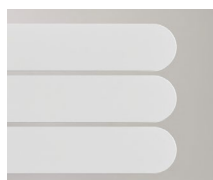
Showing Textured Grey

AL H

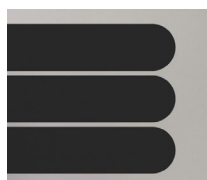


For valves see the Vogue UK Website
VL003 Chrome pictured
£51.00 ex VAT
£61.20 inc VAT

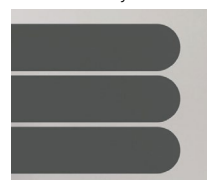
Textured White



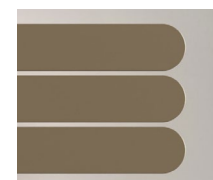
Textured Black



Textured Grey



Matt Bronze



CRANBY TOWEL RAIL

	Dimensions (mm)			No. of Cross Bars	Pipe Centres (mm)	ΔT 50°C Watts/BTU's	ΔT 60°C BTU's	£ White / Black / Grey		£ Matt Bronze		Stock Info
	H	W	D					ex VAT	inc VAT	ex VAT	inc VAT	
AU043	250	400	84	3	50	418 / 1426	1807	234.00	280.80	245.18	294.22	✓
AU043	540	400	84	6	50	882 / 3009	3812	359.59	431.51	376.71	452.05	✓
AU043	830	400	84	9	50	1347 / 4596	5823	485.98	583.18	509.13	610.96	✓
AU043	1120	400	84	12	50	1811 / 6179	7829	612.89	735.47	642.07	770.48	✓
AU043	1410	400	84	15	50	2275 / 7762	9834	777.43	932.92	814.41	977.29	✓

HEXON TOWEL RAIL AU035

Geometric forms give the Hexon aluminium towel warmer bold, yet simple styling. Four popular heights are available in Textured Black or Grey. Using the same design detailing as the Ardor radiators, both towel rail and radiators can be paired within larger bathrooms. These lightweight aluminium designs are efficient and mark the latest materials trend in heated appliances.

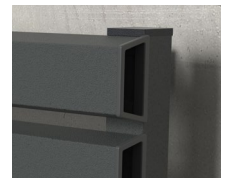


For valves see the Vogue
UK Website
VL003 Chrome pictured
£51.00 ex VAT
£61.20 inc VAT

Textured Black



Textured Grey

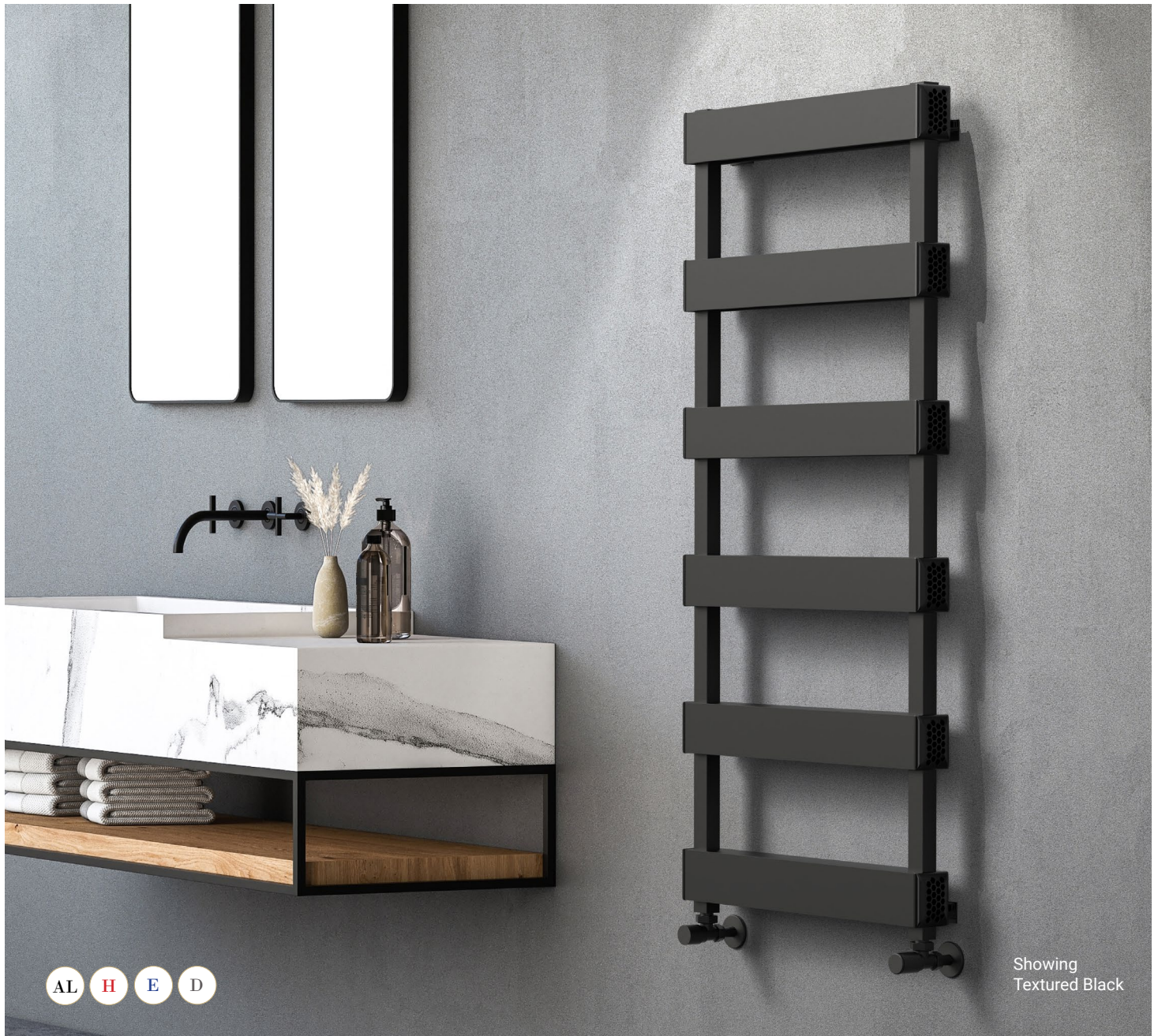


HEXON TOWEL RAIL

	Dimensions (mm)			No. of Cross Bars	Pipe Centres (mm)	ΔT 50°C Watts/BTU's	ΔT 60°C BTU's	£ Black / Grey		Stock Info
	H	W	D					ex VAT	inc VAT	
AU035	600	500	84	6	455	426 / 1454	1842	278.71	334.45	✓
AU035	1000	500	84	9	455	662 / 2259	2862	429.90	515.88	✓
AU035	1300	500	84	12	455	875 / 2986	3783	579.48	695.38	✓
AU035	1700	500	84	15	455	1109 / 3784	4794	726.90	872.28	✓

KINTRA TOWEL RAIL AU030

Kintra features an impressive heating performance along with generous space for hanging towels. Crafted from superior aluminium, it comes in a choice of Textured Black and Textured Grey finishes. This towel rail matches the bold styling of the Tarlton range of aluminium essential radiators.



AL H E D

Showing
Textured Black



For valves see the Vogue
UK Website
VL003 Matt Black pictured
£51.00 ex VAT
£61.20 inc VAT

Textured Black



Textured Grey



KINTRA TOWEL RAIL

	Dimensions (mm)			No. of Cross Bars	Pipe Centres (mm)	ΔT 50°C Watts/BTU's	ΔT 60°C BTU's	Black / Grey		Stock Info
	H	W	D					ex VAT	inc VAT	
AU030	700	515	87-96	4	458	484 / 1651	2092	300.25	360.30	✓
AU030	1000	515	87-96	5	458	620 / 2115	2680	394.56	473.47	✓
AU030	1205	515	87-96	6	458	744 / 2539	3217	480.87	577.04	✓
AU030	1405	515	87-96	7	458	868 / 2962	3753	563.56	676.27	✓

FEIZOR TOWEL RAIL AU032

A sleek and modern aesthetic with sharp, defined lines, Feizor offers ample room for hanging towels. Constructed from premium-grade aluminium, it is available in Textured White and Black finishes.



AL H E D



For valves see the Vogue
UK Website
VL003 Chrome pictured
£51.00 ex VAT
£61.20 inc VAT

Textured White



Textured Black



FEIZOR TOWEL RAIL

	Dimensions (mm)			No. of Crossbars	Pipe Centres	ΔT 50°C Watts/BTU's	ΔT 60°C BTU's	£ White / Black		Stock Info
	H	W	D					ex VAT	inc VAT	
AU032	780	485	85-105	12	455	302 / 1030	1305	135.55	162.66	✓

ORIEL HEATED STORAGE AU052

A radiator less ordinary; Oriel gives neat storage capabilities within a design that offers a focal point. The aluminium heated surround comes in either Textured Black or White. The wooden shelf details can be used for hand towel storage and for displaying other bathroom accessories. Simple valves are discreetly situated underneath the design and can be either Chrome, White or Matt Black.

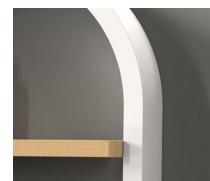


*Note: The shelves on Oriel are made of natural wood textures, which may differ from the image shown and from product to product.

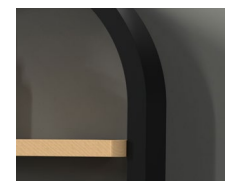


For valves see the Vogue UK Website
 VL003 Matt Black pictured
 £51.00 ex VAT
 £61.20 inc VAT

Textured White



Textured Black



ORIEL HEATED STORAGE

	Dimensions (mm)			No. of Shelves	Pipe Centres (mm)	ΔT 50°C Watts/BTU's	ΔT 60°C BTU's	£ White / Black		Stock Info
	H	W	D					ex VAT	inc VAT	
AU052	1175	500	150	3	50	898 / 3064	3882	1564.87	1877.84	✓



Benchmark - **Aluminium Essentials**

VOGUE (UK) LTD, STRAWBERRY LANE, WILLENHALL, WEST MIDLANDS, WV13 3RS

T: +44(0) 1902 387000 E: sales@vogueuk.co.uk W: www.vogueuk.co.uk